



Traverse PC

TPC Desktop 2014

TPC Road Map

TPC Desktop 2014 completes the fourth step in a grander scheme to bring you the best surveying software available. In addition to the many new features in each release, we've also been guided by the following road map:

- Step 1 - **TPC Desktop 2010** introduced a new user interface with slide-out views.
- Step 2 - **TPC Desktop 2011** introduced geodetics and the PLSS.
- Step 3 - **TPC Desktop 2013** contained a complete code rewrite for scalability and stability.
- Step 4 - **TPC Desktop 2014** introduces agile software releases.

Beginning in 2014, TPC is fully up to speed with agile software releases, getting the features you ask for, into your hands, when you ask for them. You won't have to wait months for the next release, then drink it all in from the 'new version fire hose'. Instead, you'll get bite-size features you can learn in stride. You're going to like the way it works.

Better Labels

TPC users continue to move from their old CAD software into TPC's drawings. Because of our Quick View™ technology, they're discovering that doing their drawings in TPC takes just a fraction of the time it does in CAD. As a result, they've been sending us some great user-requests related to Line Labels which we've been able to meld into some great new features in TPC Desktop 2014.

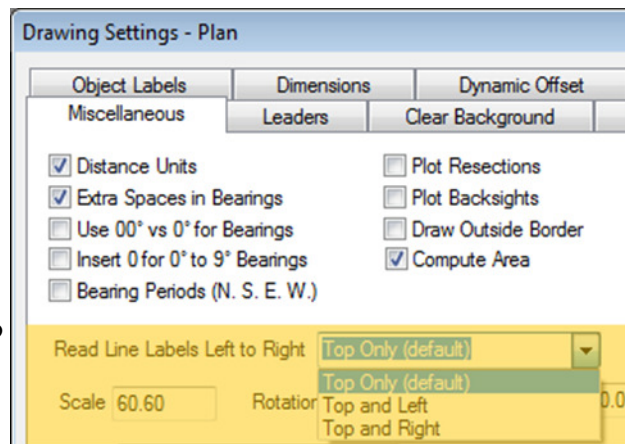
Label Orientation

In the Miscellaneous drawing settings, you can now specify the label orientation for traverse line labels, curve labels, labels of lines you draw manually, lot labels and point labels.

TPC will orient every label so that it reads left to right when you hold of the top of the page, the left side of the page or the right side of the page. Pretty neat!

Many of you have asked for finer control over how TPC applies labels to objects. You're already letting TPC's Quick View™ do the lion's share of the drafting for you and you wanted it to go all the way with this one.

And while we were at it, we also made label orientation take for drawing rotation into account.. Rotate a drawing so that North is down instead of up and TPC will flip lot labels and line labels so that they still read from Top Only, Top and Left or Top and Right.



Top Only (the current default)

This is the way TPC has labeled objects forever. Every label reads from the top. Sometimes you might tilt your head a little to the left or to the right, but you can read them all.

Top and Left

This option orients labels to they read left to right while holding up either the left side or the top of the drawing. Preference is given to the top, so only labels that are mostly vertical are oriented to the left side of the page.

Top and Right

This option is just like Top and Left except it orients labels that are mostly vertical to the right side of the page.

New in TPC 2014:

- Label Orientation
- Label Inside/ Outside
- Reverse Direction Labels
- Stack vs. Align Labels
- Label Leaders
- Point Label Leaders
- ASCII Convert Coordinates
- Drawing Variables
- More Layers
- Delete Raw Data
- Coordinate Conversion What List
- New Cadastral Learning Guide Chapters
- More...

Surveys:

- Boundary
- Mortgage
- ALTA
- Site
- Topographic
- Construction
- Cadastral
- Geodetic
- Control
- Subdivision
- Metes And Bounds

Requirements:

- Windows 8, 7, Vista
- 60 MB hard disk space w/Samples
- 2 GB Ram

Output Devices:

- Any printer or plotter with a Windows driver



TPC Desktop 2014 Update

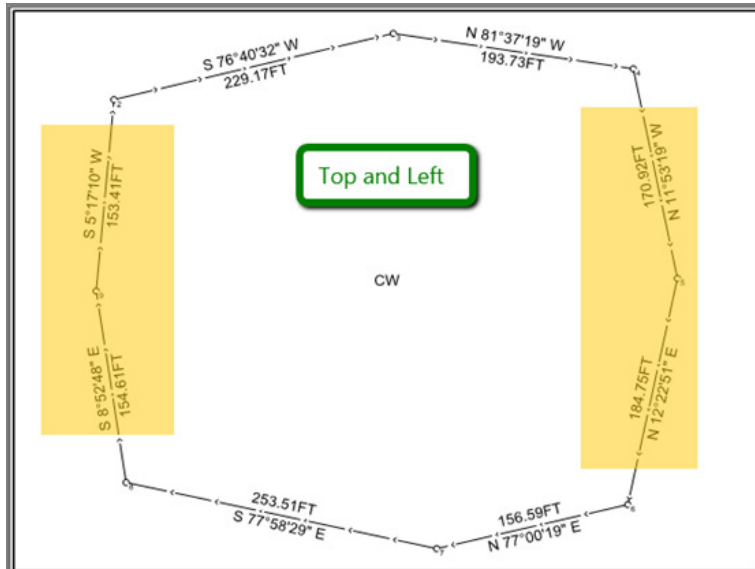
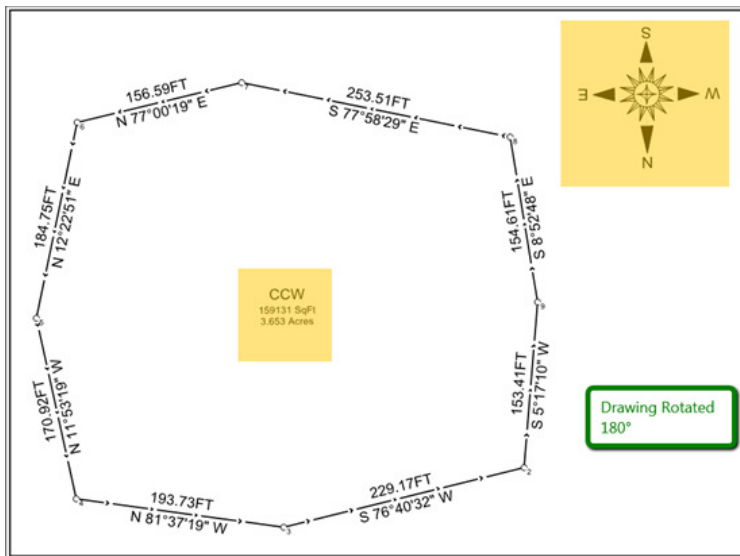


Table References

Even table references adhere to the orientation. L1, L2, C1, C2 will all read left to right based the orientation you choose.

Rotated Drawings

We rotated this drawing 180° (see the North arrow). Notice that the lot label CCW and area are still oriented to the top of the page. The line labels are also oriented Top and Left.



Traverse PC is smart enough to rotate the lot labels with the drawing to the point where they still look right and are readable. At some point, however, the label would switch to reading upside down. That's when TPC makes the change and flips the label from upside down to right side up

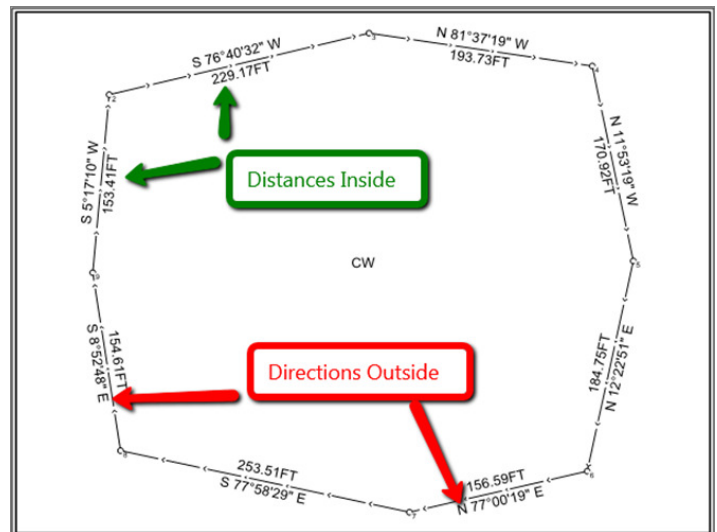
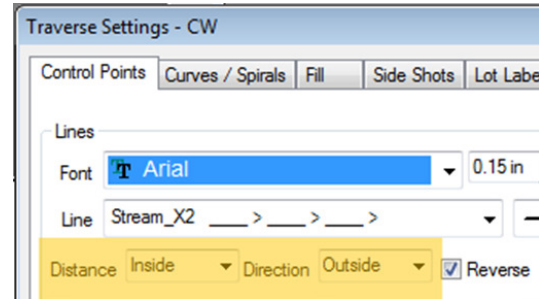
Inside/Outside

In the Traverse Settings, you can choose from *Above*, *Below*, *Inside* or *Outside*. Place all the distances inside a foundation traverse, or outside a wetland boundary.

As long as we were tackling labels, this new feature was a

natural. Many of our old C&G users loved this option and asked us to put it in Traverse PC.

Here, we've told TPC to draw the Distances *Inside* and the Directions *Outside*. You can see the results below.

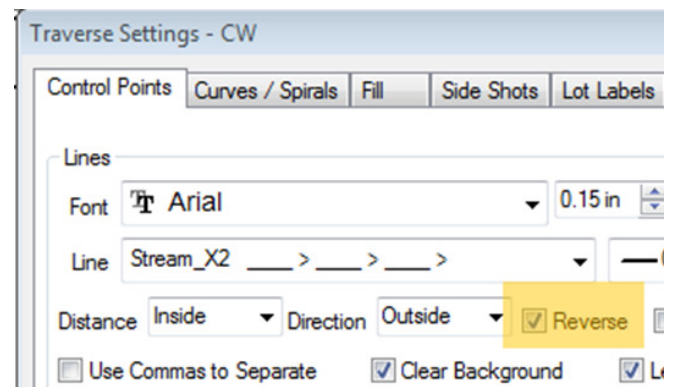


Reverse Direction Labels

TPC Desktop 2014 gives you more control over the direction you use for bearing labels. You can reverse the direction of an entire traverse or individual direction labels.

Traverse Labels

By default, TPC labels traverse lines in the direction of the traverse, but we added a new option to reverse the direction for the entire traverse.



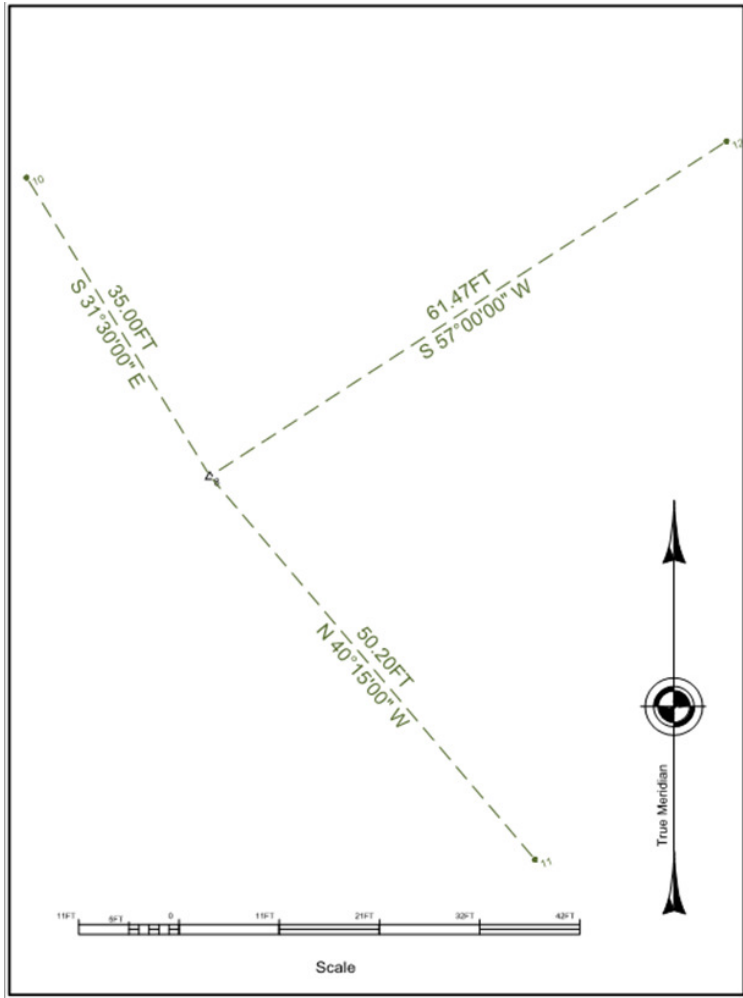
With *Reverse* turned on, TPC still orients the labels per the drawing settings (Top Only, Top and Left, Top and Right), but generates the opposite bearing label.

So a line with a bearing of N 45° E will generate the bearing label S 45° W when reversed.

TPC Desktop 2014 Update

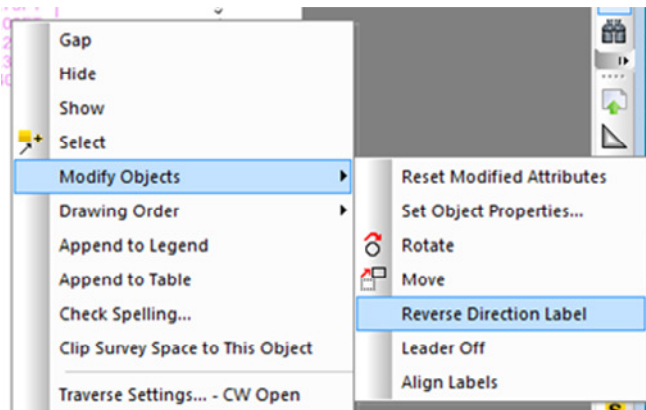
Reverse Traverse Example

Let's take a quick look at where this can come in handy. Here's a corner diagram, showing the location of its three bearing trees. We've reversed the direction for the side shot settings. Now the bearings are from the accessory to the corner, ready for the corner card notes.



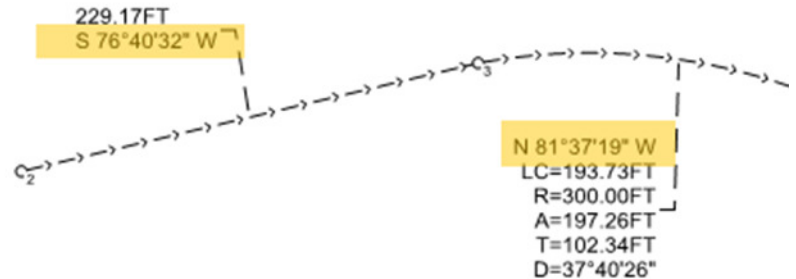
Reverse Direction of Any Label

Once TPC has labeled a traverse line or even a line you drew manually, just right click and choose **Reverse Label Direction**. Don't want it reversed? Just right click it and choose



Reset Label Direction. This works for traverse line labels and object labels you manually add to a line or arc.

In this example, we right clicked one of Traverse PC's stacked curve labels and choose **Modify Object, Reverse Direction Label**. The long chord bearing changed from S 81°37'19" E to N 81°37'19" W. We also reversed the tangent coming in from N 76°40'32" E to S 76°40'32" W.



We can restore their directions by choosing **Modify Object, Reset Direction Label** or by resetting all modified attributes.

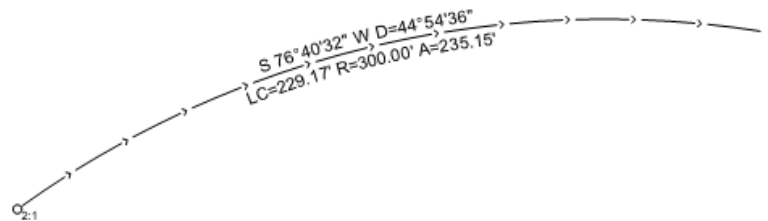
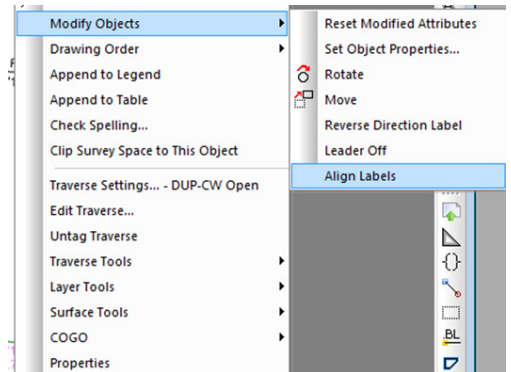
Stacked vs. Aligned Labels

Many of you know how TPC evaluates each tangent label and draws it off to the side with an optional leader if it doesn't fit. You also know how TPC will stack curve and spiral information off to the side unless you choose the new arc aligned option we introduce in TPC Desktop 2013.

In TPC Desktop 2014, you can still let the traverse settings do all of this PLUS you can manually stack or align related labels.

To stack the labels above and below a traverse line, just right click either one and choose **Stack Related Labels**.

To put them back, right click and choose **Align Related Labels**.



Files

- ◆ Convert coordinates when importing / exporting ASCII files
- ◆ The ASCII and Generic Raw imports now retain the geodetic preference of existing points if they are overwritten
- ◆ TDS SK Records (Staked Points)
- ◆ Initial support for Trimble Business Center

Drawings

- ◆ Point label leaders
- ◆ Turn leaders on/off for any label
- ◆ New Apply button in Drawing Settings
- ◆ Drawing variables can now be used anywhere in a text object
- ◆ New pull down for drawing variables when editing text (shown here)
- ◆ New options for leading zeros in bearings.
- ◆ More layers allowed
- ◆ AutoCAD 2014 drivers
- ◆ Safer graphical traverse moves
- ◆ Multiple columns in tables are back

COGO

- ◆ Convert coordinates now includes a 'What' list and a Summary button so you can see exactly what gets converted
- ◆ The Distance Offset now accepts zeros for the Distance and Offset fields
- ◆ Date and time on all COGO summary reports

Miscellaneous

- ◆ Delete Raw Data command
- ◆ Three new chapters in Cadastral Learning Guide
1) creating a geodetic center quarter, 2) inserting geodetic sixteenth corners and 3) importing GMM files.
- ◆ TPC now retains upper/lower case survey file names
- ◆ Drag-n-drop traverses and drawings between groups in their managers
- ◆ More...

