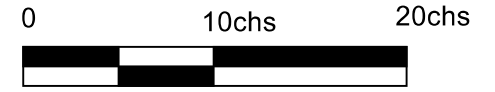
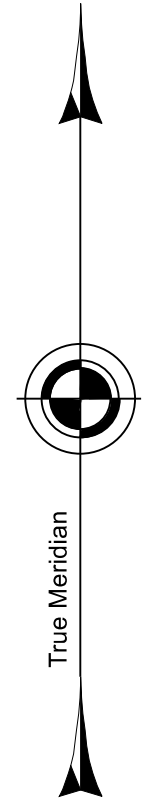
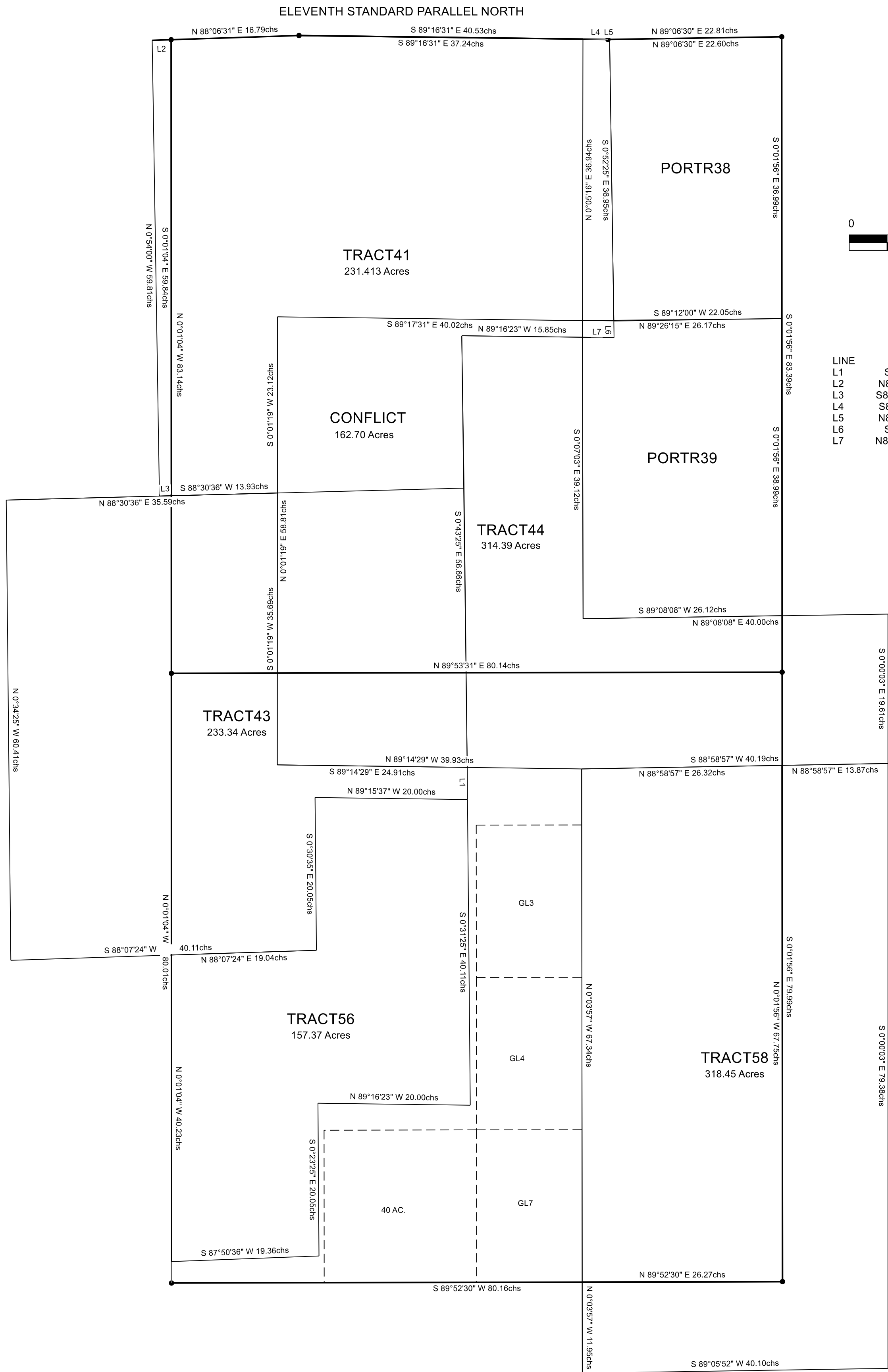


# CONFLICT SAMPLE PER THE 1973 MANUAL OF INSTRUCTIONS USBLM.



LINE	BEARING	HORIZ DIST
L1	S0°38'30"E	4.210chs
L2	N88°06'31"E	2.480chs
L3	S88°30'36"W	1.558chs
L4	S89°16'31"E	3.290chs
L5	N89°06'30"E	0.210chs
L6	S0°52'25"E	2.190chs
L7	N89°16'23"W	4.149chs

FILE NAME		
S3S10CON.trv		
SCALE	DATE	DRAWN BY
10 Chs/In	10-26-2014	Jack Kesler
JOB	REVISION	SHEET
1234	1/1	1/1

This map drawn with TRAVERSE PC Software